

Key to Symbols

- ETC Source4 PAR MFL
- ADB Lighting F201
- ADB Lighting C203
- ETC Source4 36deg
- ETC Source4 LEDLS 26deg
- Martin MAC TW1
- Martin MAC TW1 Narrow
- Robe Robin T1 Profile
- ETC Revolution
- Impression X4 Bar 20 (20ch)

Accessories

- 6.25in Half Top hat

Legend

Jonathan Chan

+44 (0)7497 829940 | 1 Milton Street, London, EC2Y 9BH
 jchan564@gmail.com | www.jonathanchanlighting.com

THIS PLAN IS TO INDICATE DESIGN INTENT ONLY AND DOES NOT IMPLY ANY METHODS BY WHICH THIS MAY BE ACHIEVED. THE LIGHTING DESIGNER ACCEPTS NO RESPONSIBILITY FOR ANY IMPROPER ENGINEERING CAUSED AS A RESULT OF THIS PLAN.

Revisions

#	Date	Revision
A	20/03/2021	Initial Drawing
B	05/04/2021	Jon C Notes
C	14/04/2021	First Draft
D	26/04/2021	Second Draft
E	05/05/2021	Jon C Notes
F	08/05/2021	Pre Moving Screens
G	15/05/2021	Channelling Changes
H	21/05/2021	Pre Life Songs / Fixture Cuts

Summer Projects

Milton Court Theatre, Guildhall School

Director: Various
 Set Designer:
 Costume Designer:
 Lighting Designer: Jonathan Chan
 Sound Designer: Thomas Dixon
 Video Designer: Various

Drawn By	Scale	Size	Issue	Sheet
Jon C	1:50	A1	H	1 of 2

Revolution Scrolls

- R00 Clear Leader
- R52 Light Lavender
- R57 Lavender
- R3220 Double Blue CTB
- R79 Bright Blue
- R367 Slate Blue
- R78 Trudy Blue
- R371 Full CTB
- R372 Half CTB
- R373 Quarter CTB
- R00 Clear
- R02 Bastard Amber
- R304 Pale Apricot
- R09 Pale Amber Gold
- R14 Medium Straw
- R22 Deep Amber
- R36 Medium Pink
- R332 Cherry Rose
- R26 Light Red
- R313 Light Relief Yellow
- R86 Pea Green
- R00 Clear Trailer

Revolution Gobos

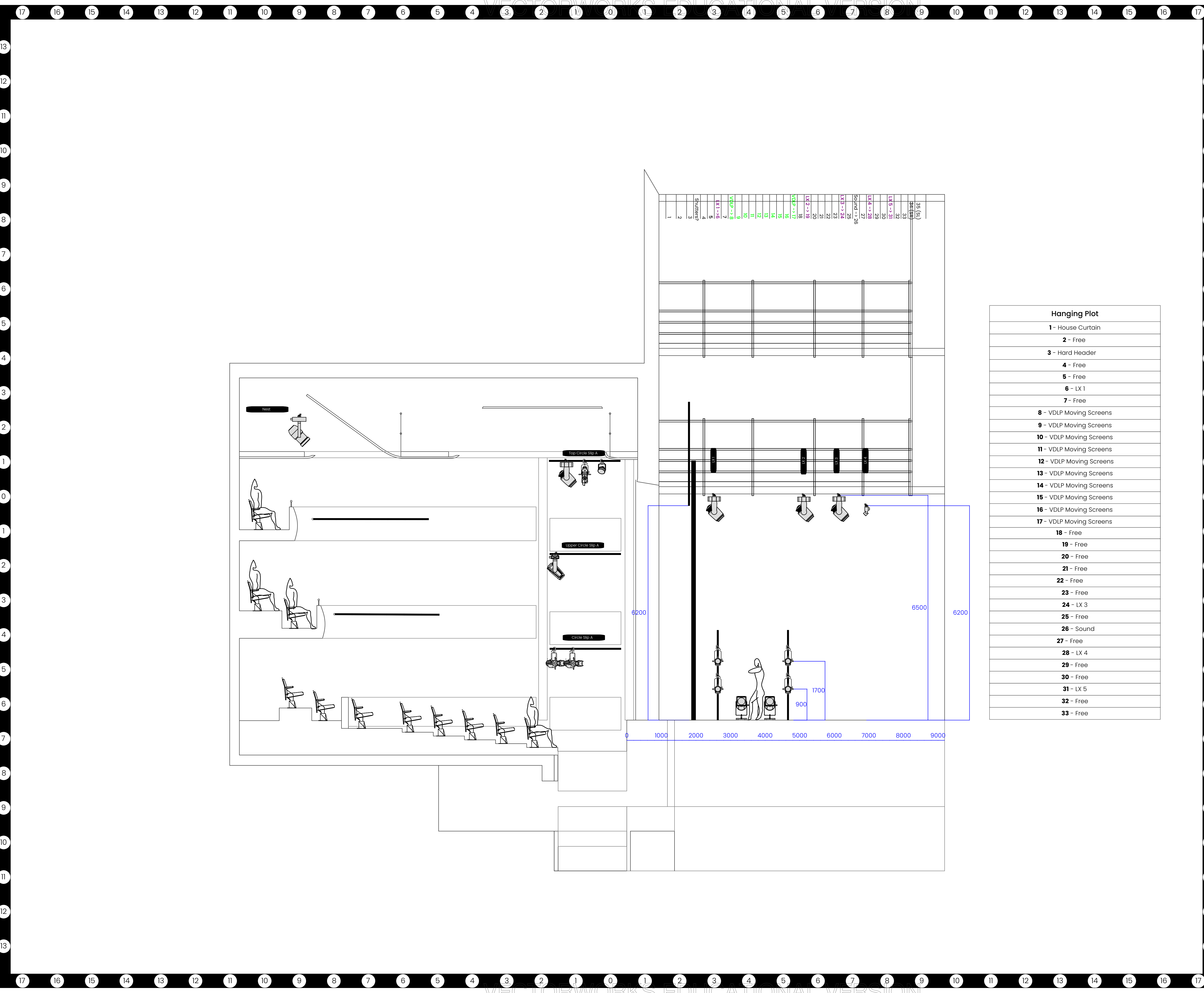
Other Channel(s)

501 Haze

General Notes

- Haze position TBC
- All Spacing as indicated on plan
- Boom Measurements are to Stage Deck
- Floor Plate C203 positions TBC - show dependent
- All Booms are on wheels
- All Ground Positions are provisional and show dependent

TI Gobos



Key to Symbols

- ETC Source4 PAR MFL
- ADB Lighting F201
- ADB Lighting C203
- ETC Source4 36deg
- ETC Source4 LEDLS 26deg
- Martin MAC TW1
- Martin MAC TW1 Narrow
- Robe Robin T1 Profile
- ETC Revolution
- Impression X4 Bar 20 (20ch)

Accessories

- 6.25in Half Top hat

Legend

Jonathan Chan

+44 (0)7497 829940 | 1 Milton Street, London, EC2Y 9BH
 jchan564@gmail.com | www.jonathanchanlighting.com

THIS PLAN IS TO INDICATE DESIGN INTENT ONLY AND DOES NOT IMPLY ANY METHODS BY WHICH THIS MAY BE ACHIEVED. THE LIGHTING DESIGNER ACCEPTS NO RESPONSIBILITY FOR ANY IMPROPER ENGINEERING CAUSED AS A RESULT OF THIS PLAN.

Revisions

#	Date	Revision
A	20/03/2021	Initial Drawing
B	13/04/2021	Jon C Notes
C	14/04/2021	First Draft
D	26/04/2021	Second Draft
E	08/05/2021	Pre Moving Screens
F	21/05/2021	Fixture Cuts / Dead Height Changes

Summer Projects

Milton Court Theatre, Guildhall School

Director: Various
 Set Designer:
 Costume Designer:
 Lighting Designer: Jonathan Chan
 Sound Designer: Thomas Dixon
 Video Designer: Various

Drawn By	Scale	Size	Issue	Sheet
Jan C	1:50	A1	F	2 of 2