
From Friday 16 April, 7.30pm
available on demand until midnight
on 30 April

Jackal Run

Created and directed by **Breach**,
devised with the Company

**GUILD
HALL**
SCHOOL

Guildhall School of Music & Drama

Founded in 1880 by the
City of London Corporation

Chairman of the Board of Governors

Vivienne Littlechild

Principal

Lynne Williams

Vice-Principal & Director of Drama

Orla O'Loughlin

Vice-Principal & Director of Production Arts

Andy Lavender

Please visit our website at gsmd.ac.uk



Guildhall School is part
of Culture Mile:
culturemile.london



Guildhall School is provided
by the City of London
Corporation as part of its
contribution to the cultural life
of London and the nation

Rehearsal photography: **Sam Ferstenberg**
& **Devon James-Bowen**

Photographs of the final year acting company are by:
Dave Buttle (Charlie Beck, Lily Hardy, Isla Lee,
Noah Marullo, Umi Myers, Felix Newman, Jidé Okunola,
Sonny Pilgrim, Alyth Ross, Dan Wolff), **Robert Harper**
(Kitty Hawthorne), **Harry Livingstone** (Nia Towle),
Wolf Marloh (Zachary Nachbar-Seckel), **Clare Park**
(Grace Cooper Milton), **Phil Sharp** (Genevieve Lewis,
Sam Thorpe-Spinks), **Michael Shelford** (Levi Brown,
Sheyi Cole, Aoife Gaston, Brandon Grace, Conor McLeod,
Hassan Najib, Millie Smith, Tara Tijani, Dolly Webb),
David Stone (Justice Ritchie), **Faye Thomas**
(Caitlin Ffion Griffiths), **YellowBelly** (Hope Kenna)

Jackal Run

Created and directed by **Breach**,
devised with the Company

Billy Barrett director/co-writer

Ellice Stevens co-writer

Dorothy Allen-Pickard dramaturg/
video director

Anna Reid design mentor

Adi Currie sound designer

Dan Light video designer

Imogen Leather costume designer

Emma Peace costume designer

Ellie Cloughton producer

From Friday 16 April, 7.30pm
available on demand until midnight
on 30 April

Filmed in Silk Street Theatre

Recording of this performance by any
means whatsoever is strictly prohibited.

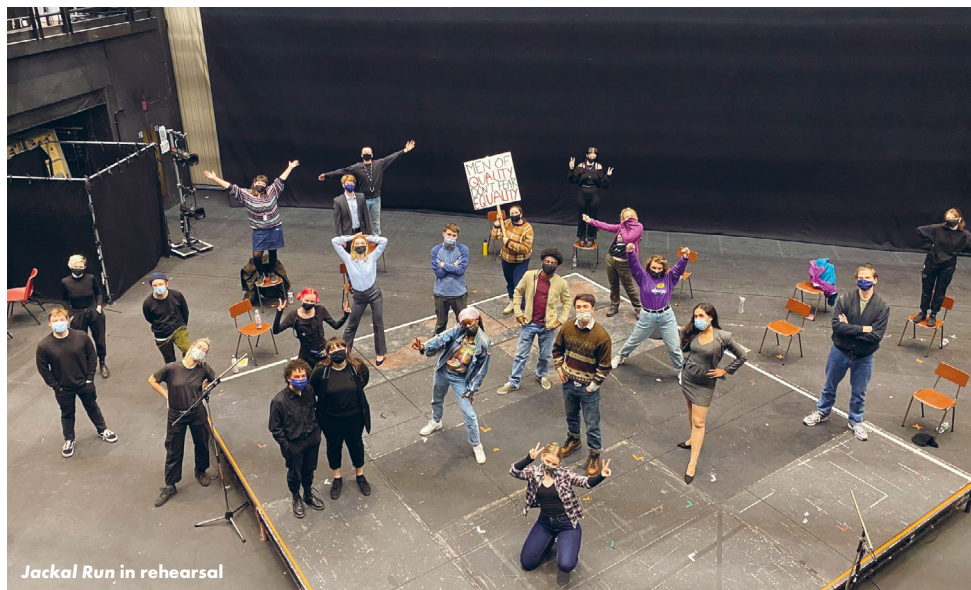
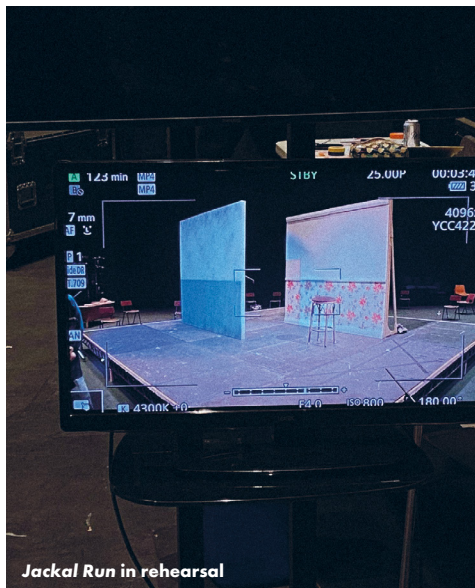
Please note that *Jackal Run* contains
strong language, adult themes, blood
and references to drug abuse.

The Play

“When the state has put an imposter in the most intimate aspects of your life, there really is no solid ground left on which to stand.”

A group of British women discover their partners are undercover police officers living under false identities. Each of their stories – spanning several decades of deception, manipulation and surveillance – are remarkably similar, and now they are looking for answers.

Jackal Run is inspired by real events, using a blend of real witness testimony and imagined characters.



Breach

Breach is a multi-award-winning multimedia theatre company founded by theatre makers Billy Barrett and Elice Stevens with video artist Dorothy Allen-Pickard, produced by Ellie Cloughton.

This core team collaborates with performers to create socially engaged, formally innovative live shows that blend subtle humour with a sharp political edge. They combine documentary and verbatim theatre techniques with devising and new writing to create a layered performance style.

Since forming in 2015, Breach have created five shows; most of which have toured nationally, garnering critical acclaim. Their most recent, *Joan of Leeds*, is a medieval mystery musical of a 14th century nun on the run in the pursuit of carnal lust. *It's True, It's True, It's True* (Fringe First Award, The Stage Edinburgh Award for Acting Excellence and UNTAPPED Award winner, 2018) re-staged a 17th Century rape trial involving two baroque painters, dramatizing how the young Artemisia Gentileschi took revenge on her abuser through vivid, violent oil paintings.

Prior to this Breach made *The Drill* (2018), a multimedia show exploring anxieties around terrorism and the idea of “rehearsing” for emergencies through training drills. *Tank* (Fringe First Award, 2016), in which a 1960’s experiment into teaching dolphins English became a metaphor for US cultural imperialism, and *The Beanfield*, which documented their attempts to re-enact a violent clash between police and New Age travellers near

Stonehenge in the 1980s. Breach were commissioned in 2017 to adapt a section of the medieval epic poem *Piers Plowman* by Penned in the Margins.

Reviews for Breach

“Constantly pushing at the boundaries of theatre, [Breach] have reinvented what we mean by verbatim and documentary theatre”

Lyn Gardner

“The consistently exciting Breach”

★★★★★ *Financial Times*

Company

Felix Newman	Chairman/Corporal Chaos
Umi Myers	Lawyer
Genevieve Lewis	Lucy
Alyth Ross	Sam/Sandra
Sonny Pilgrem	Officer 1
Jidé Okunola	Officer 2
Brandon Grace	Officer 3
Charlie Beck	Officer 4
Lily Hardy	Activist 1
Hope Griffiths	Activist 2
Tara Tijani	Activist 3
Caitlin Ffion Griffiths	Activist 4
Sheyi Cole	Relative

Production Team

Scenic Art Coordinator

Fiona Newton

Scenic Artist

Danielle Da Costa

Design Realisation Collaborators

(paint & props)

Charlotte Cross

Em Dethick-Jones

Olivia Hilton-Foster

Emily Nellis

Design Realisation Collaborators

(construction & paint)

Mary Deakes

Chloe Rushbrook

Lighting collaborators

Eilidh Mackenzie

India Mills

Ed Walters

Video collaborators

Hayden Gurney

Rosie Roberts

Ben Tinniswood

Stage Management Team

Devon James-Bowen

Eve Clayton

Production Assistant

Molly Barron

Additional Production Staff

Second Camera

Jonnie Haldon

Assistant Producer

Ophir Westman

Staff Production Manager

Tom Mackey

Staff Stage Management Supervisor

Lucy Serjeant

Special thanks to

Qian Yan Tan

Beri Valentine

Final year actors 2020/21



**Charlie
Beck**



**Levi
Brown**



**Sheyi
Cole**



**Grace
Cooper Milton**



**Aoife
Gaston**



**Brandon
Grace**



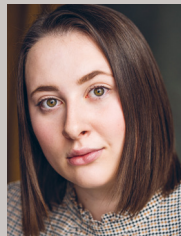
**Caitlin Ffion
Griffiths**



**Lily
Hardy**



**Kitty
Hawthorne**



**Hope
Kenna**



**Isla
Lee**



**Genevieve
Lewis**



**Noah
Marullo**



**Conor
McLeod**



**Umi
Myers**



**Zachary
Nachbar-Seckel**



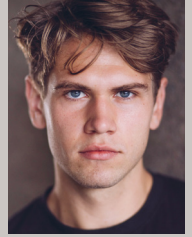
**Hassan
Najib**



**Felix
Newman**



**Jidé
Okunola**



**Sonny
Pilgrim**



**Justice
Ritchie**



**Alyth
Ross**



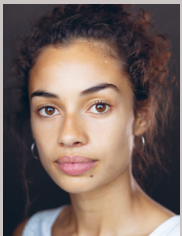
**Millie
Smith**



**Sam
Thorpe-Spinks**



**Tara
Tijani**



**Nia
Towle**



**Dolly
Webb**



**Dan
Wolff**

Biographies

Billy Barrett director/co-writer

Billy is a theatre director, writer, and co-founder of Breach.

Recent productions for Breach include *Joan of Leeds* and *It's True, It's True, It's True*. Outside of the company, he has made work for HighTide and the Arcola Theatre, and was previously a theatre critic for publications including *The Scotsman*.

Billy studied theatre at Warwick University and Queen Mary, where he was awarded the Principal's Prize and Marjorie Thompson Award.

Ellice Stevens co-writer

Ellice is a writer, performer and co-founder of Breach.

As a performer Ellice's most recent credits include: *Artemisia It's True, It's True, It's True* (Breach); and *Artemisia on Trial* (Artemisia Films, The Space); Prospero *The Tempest* (The Handlebards); Daphne *The Girl Who Turned into a Tree* (Cut the Cord Theatre).

She has co-written on all of Breach's theatrical productions including *Joan of Leeds* (2019); *It's True, It's True, It's True* (2018); *The Drill* (2017); *Tank* (2016) and *The Beanfield* (2015).

Anna Reid design mentor

Credits for Guildhall School; *Autumn Opera Scenes 2019 & 2020*; *Little Green Swallow* (associate to Dick Bird).

Further credits include: *Four Minutes Twelve Seconds*, *The Kitchen Sink* and *Fumpers for Goalposts* (Oldham Coliseum); *Scrounger* and *I'm Gonna Pray For You So Hard* (Finborough Theatre); *Dust* (New York Theatre Workshop); *Cash Cow*, *Paradise* and *The Hoes* (Hampstead Theatre); *The Sweet Science of Bruising* (Wilton's Music Hall); *Our Country's Good* and *A Midsummer Night's Dream* (Tobacco Factory Theatres); *Soft Animals*, *Drip Feed*, *Fabric*, *Fury* and *Brute* (Soho Theatre); *Twelfth Night*, *The Sweet Science of Bruising*, *Collective Rage*, *Dear Brutus*, *The Cardinal* and *School Play*, (Southwark Playhouse); *Grotty* (The Bunker); *Schism* (Park Theatre); *Rasheeda Speaking* (Trafalgar Studios); *Rattle Snake* (Live Theatre Newcastle, Theatre Royal York and Soho Theatre).

Anna is a graduate of Wimbledon College of Art and was selected to represent the UK as an emerging designer at World Stage Design 2017.

Dorothy Allen-Pickard dramaturg/video director

Dorothy is a filmmaker and multidisciplinary theatre-maker from South-East London.

In 2019, she received the BFI New Talent Award and was named as one of Broadcast's Hotshots. She has a particular interest in merging aspects of documentary, fiction and theatre to explore subjects such as mental health, disability and the social and political changes that affect those who are marginalised. She is the co-founder and video editor of the film journal *Another Gaze* and a member of the award-winning multimedia theatre company Breach.

Recently, Dorothy completed an MA in Directing Fiction at Goldsmiths University and is currently developing her debut dramatic feature *Weekend Dad*.

Adi Currie sound designer

Adi is currently in their second year of the BA (Hons) Production Arts (Theatre Technology) programme at Guildhall School.

Guildhall credits include Lighting Programmer *Opera Triple Bill* (dir. Stephen Medcalf); Lighting Programmer *Pod* (dir. Jamie Bradley and Vicki Igbokwe).

Other credits include Lighting Programmer for Vault Festival 2020 and Head Technician for Activising for Change (Theatre Productions).

Dan Light video designer

Dan is currently in his second year of the BA (Hons) Production Arts (Theatre Technology) programme at Guildhall School.

Dan enjoys working with video in performance. This year he has worked doing both video design and assisting live stream broadcasts and pre-recorded productions.

During his second year, Dan has worked on several productions in a video capacity, including Video Designer and Vision Mixer *Pod* (dir. Jamie Bradley and Vicki Igbokwe); Vision Mixer *Opera Triple Bill* (dir. Stephen Medcalf).

Other credits at Guildhall: Lighting Programmer *Little Green Swallow* (dir. Martin Lloyd-Evans).

Ellie Cloughton producer

Ellie is an independent theatre producer and consultant who has worked with companies across the UK. She is currently Company Producer for LUNG & Breach, and Co-Director and Producer for Barrel Organ. Her role focuses on producing all company work and on the organisational and strategic development of these companies, which best places them to deliver their groundbreaking and formally innovative work.

She began her career at Headlong, has been shortlisted for The Old Vic 12 and trained at Mountview Academy of Theatre Arts in MA Creative Producing. She is the Chair of the Board of Trustees for She Productions and a Trustee for Zoo Co. She is also a lecturer and tutor for the CGO Institute.

Her theatre credits include *The Children's Inquiry* (Queen's Theatre Hornchurch); *Tess* (English Touring Theatre); *Foan of Leeds* (New Diorama Theatre); Hull Takeover Festival (Absolutely Cultured); *CONSPIRACY* (Underbelly Untapped Award, Edinburgh Festival Fringe); *It's True, It's True, It's True* (Fringe First Award & The Stage Award 2018, New Diorama Theatre & Underbelly, Edinburgh Festival Fringe, UK Tour, Barbican Centre); *Trojan Horse* (Amnesty International Freedom of Expression & Fringe First Award 2018); *Summerball* (Edinburgh Festival Fringe & UK Tour); *Arabian Nights* (Hoxton Hall); *The Drill* (UK Tour); *Goodnight Mr Tom, It's A Wonderful Life* (East Riding Theatre); *Who Cares* (UK Tour); *It's Different For Girls* (East Riding Theatre &

UK Tour); *E15* (BAC & UK Tour); *The Pulverised* (Arcola & York Theatre Royal); *It Is So Ordered* (Pleasance Theatre); *Dreamless Sleep* (Upstairs at the Arts); *The Storytellers* (East Riding Theatre); *Odd Shaped Balls* (Old Red Lion Theatre) and *Don't Smoke In Bed* (Finborough Theatre).

As Assistant Producer: *Disco Pigs* (Trafalgar Studios) and *All Our Children* (Jermyn Street Theatre).

Guildhall School Scholarships Fund

Each year the Scholarships Fund enables talented young actors, production artists, musicians and theatre technicians to take up their places or continue their studies at Guildhall School. We are extremely grateful to many trusts, foundations, businesses, City livery companies and individuals who make annual donations to the Scholarships Fund, and to those people who make provision for legacy donations in support of the School in their wills. Students involved with our 2020/21 theatre productions who have received support from the Scholarships Fund and from external donors are as follows:

Acting

Guildhall Scholars

Sheyi Cole
Caitlin Ffion Griffiths
Lily Hardy*
Hope Kenna
Isla Lee
Hassan Najib
Jidé Okunola
Alyth Ross
Sam Thorpe-Spinks
Tara Tijani
Dolly Webb**

The Damian Lewis Finishing Fund Scholar

Justice Ritchie

City of London Scholars

Grace Cooper Milton
Aoife Gaston
Nia Towle

Noel Coward Foundation Scholar

Charlie Beck

Rigler-Ollerton Scholar

Conor McLeod

The Bess Jones and Leigh Hudson Award Holder

Brandon Grace

The Nicky Bird Scholar

Levi Brown

The Stanley Picker Trust Scholar

Felix Newman***

*also supported directly by *The Lilian Baylis Award*

**also supported directly by Sophie's Silver Lining Trust

***also supported directly by The Sir John Gielgud Charitable Trust

Production Arts

Guildhall Scholars

Laura Alexander-Smith
Molly Barron
Georgie Bottone
Ros Chase
Eve Clayton
Joshua Collins
Kyra Coppini
Ryan Davies
Mary Deakes
Jack Garner-Greene
Bradley Halliwell
Olivia Hilton-Foster
Holly Hooper
Miriam Houghton
Edward Jackson
Devon James-Bowen
Sammy Lacey
Samantha Liquorish
Kerry Loosemore
Eilidh Mackenzie
Rylee McDaniel
Livvy Meeks
Stanley Olden
Sophie Presswell

Benedict Rattray
Maisie Roberts

Rosie Roberts
Daniel Robinson
Natalya Scase
Matthew Servant
Matt Shraga

Ema Soares Da Cunha

Andrea Støier Andersen

Allegra Totaro-Wainwright

Qian Yan Tan
Katherine Verberne
Ophir Westman
Adam Woodhouse

City of London Scholars

Sophie Bramley
Reuben Cohen
Dani Diego
Sam Levy

Leathersellers' Scholar

Kate Stockwell

Tallow Chandlers' Scholar

Finlay Anderson

Skinner's' Lawrence Atwell Scholar

Fiona Newton

B&T Scholars

Tara Boland
Charlie Vince-
Crowhurst

Leverhulme Arts Scholars

Samuel Dawson
Em Dethick-Jones
Poppy Harnett
Amy Hill
Emma Horne
Viktor Mileika
Emily Nellis
Pete Reavey
Jack Stevens
Naomi Wright

The Vanstone Scholar

Takiyah Campbell

The Steel Charitable Trust Scholar

Monika
Zwierzchowska

Carpenters' Company Production Arts Scholarship

Emylly Ombok

The Salters Production Arts Award Holder

Abu Mensah

The Jane Ades Ingenuity Scholar

Rin Akiyama

Watch Guildhall events online for free

Until we can welcome audiences back to our buildings once again, Guildhall School invites you to experience the power of the performing arts online.

Visit our website to enjoy exceptional performances delivered by the School's vibrant community of musicians, actors, production artists and special guests.

All broadcasts – from big band gigs to orchestral concerts, solo recitals to drama productions – are free of charge to watch.

Discover more at gsmd.ac.uk/events



GUILDHALL
SCHOOL



Guildhall School
is provided by the
City of London Corporation



[@guildhallschool](https://www.instagram.com/guildhallschool)